

LANDSCAPING

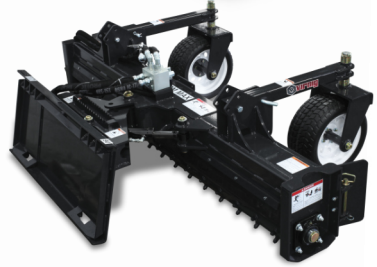
POWER RAKE

Available widths 72" & 90"

Grade soil and gravel, prepare seedbeds, and remove debris with more torque and less maintenance than a chain drive rake.



Shown with optional Hydraulic Angle



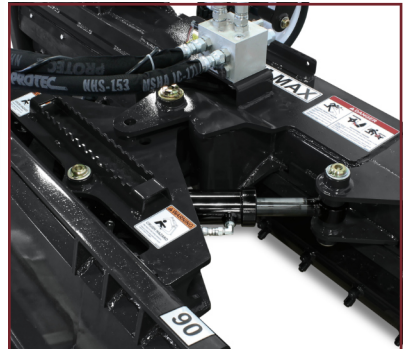
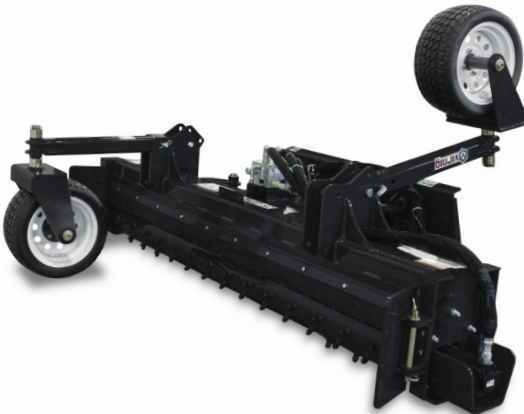
Char-Lynn

15-25 GPM
RECOMMENDED
FLOW RATE

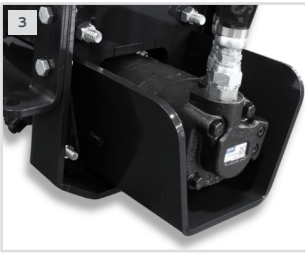
DIRECT DRIVE
EATON® MOTOR

**MANUAL &
HYDRAULIC**
ANGLE AVAILABLE

GREATER THAN
1500 LB
LOADER OPERATING CAPACITY



OPTION: HYDRAULIC ANGLE
Angle the rake 25° left or right from inside the cab.



1. BI-DIRECTIONAL OPERATION IN FORWARD OR REVERSE

2. ANGLE THE RAKE 25° LEFT OR RIGHT

3. GUARDED MOTOR

4. FLOATING DESIGN FOR A SMOOTH FINISH & PROVIDES FULL DOWN PRESSURE CAPABILITY

5. CARBIDE TIP TEETH

6. FLAT-FREE URETHANE FILLED TIRES FOR EASY MAINTENANCE

MODEL	PWR72	PWR90
Raking Width (in.)	72.0	90.0
Raking Width at Full Angle (in.)	65.3	81.5
Overall Width (in.)	84.0	102.0
Overall Height (in.)		27.5
Overall Depth (in.)		68.5
Drum Diameter (in.)		8.5
Number of Teeth	109	139
Float Link Angle (degrees)		60
Rake Angle (degrees)		(+/-) 25
Recommended Flow Rate (GPM)	15-25 Standard Flow Only	
Approximate Weight (lbs)	1335	1440
Recommended Loader Capacity	Greater than 1500 lbs	